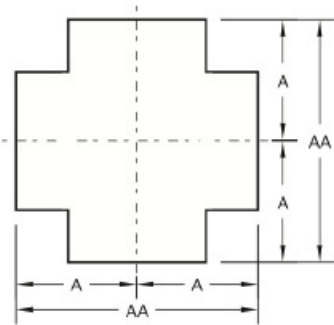
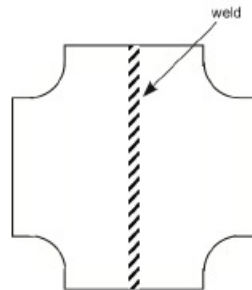
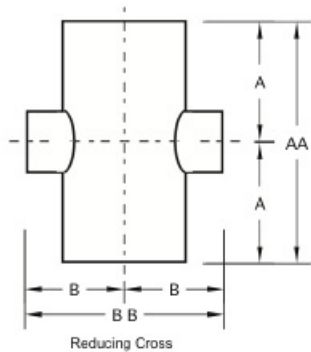


# CROSS (Straight / Reducing)

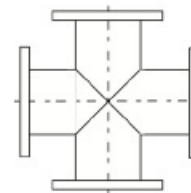


SIZE (IPS / OD)	DIMENSIONS			
	B1 6.9 (Standard)		B1 6.1 (LongTang)	
	A	AA	A	AA
3	3 3/8	6 3/4	5 1/2	11
4	4 1/8	8 1/4	6 1/2	13
6	5 5/8	11 1/4	8	16
8	7	14	9	18
10	8 1/2	17	11	22
12	10	20	12	24
14	11	22	14	28
16	12	24	15	30
18	13 1/2	27	16 1/2	33
20	15	30	18	36
24	17	34	22	44

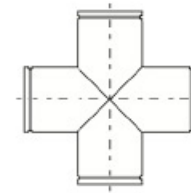
Dimensions to ANSI B16.9/B16.1; other dimensions available upon request.



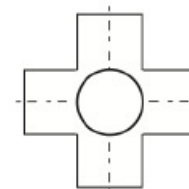
Cross built from (2) tees



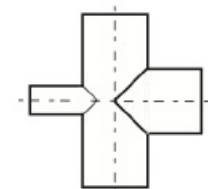
Flanged cross (B1 6.1)



Roll grooved cross (B1 6.1)



Side-outlet cross (B1 6.9 / B1 6.1)



reducing cross one branch

- Manufactured to the specs and tolerances of ASTM A774.
- Custom dimensions available upon request.
- Available in 304L, 316L, 317L, carbon steel or other materials upon request.
- Available ends for B16.9: butt weld or beveled.
- Available ends for B16.1: butt weld, beveled, grooved, flanged, or Van Stone.
- Multi-port / side-outlet crosses also offered.